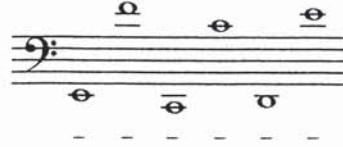
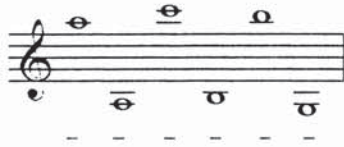


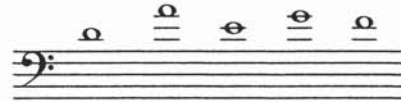
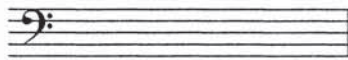
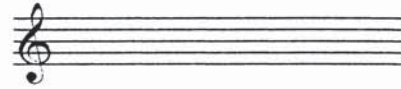
After Lesson #20

QUIZ #4
(Leger Lines of Both Staves)

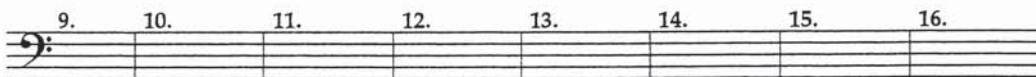
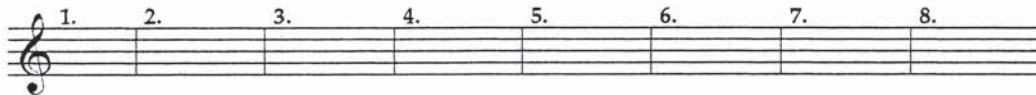
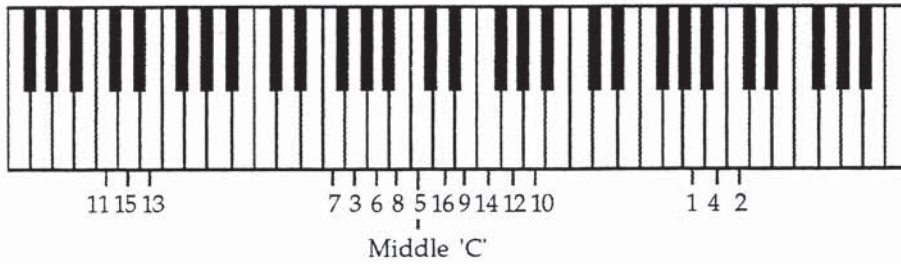
1. Fill in the corresponding letter name to the note on the treble and bass staves:



2. Write a whole note in the staff that would produce the same pitch that is shown on ledger lines:



3. Write a note in the measure that corresponds with the numbered piano keys:



Name _____ Date _____